



## Safety & Security Services 2009 Safety Statistics

Group	Faculty/School/Dept	Accident Outcome	2008	2009
Executive Director Advancement	College Marketing & Enrolment	First Aid	1	
	Public Relations	First Aid	1	
Executive Director Advancement Count			<b>2</b>	
Office of the President	Registrar	No Injury	1	
		First Aid		2
		Health Care		1
Office of the President Count			<b>1</b>	<b>3</b>
VP Business Development	Marketing	Lost Time		1
	School of Part Time Studies	First Aid	2	
	Language Institute	No Injury		1
VP Business Development Count			<b>2</b>	<b>2</b>
VP Student Services	Financial Aid	First Aid	1	1
		No Injury		1
	Registrar	First Aid	1	
		Health Care	1	
		Lost Time	1	
Student Services	First Aid	3	1	
Student Support Services	First Aid		1	
VP Student Services Count			<b>7</b>	<b>4</b>
VP Academic	Academic Development	No Injury		1
	Academic Operations & Planning	First Aid	1	
		Health Care	1	
		First Aid	1	
	Career & Academic Access Centre	First Aid	1	
	Faculty of Arts, Media & Design	First Aid	1	1
	Faculty of Business & Hospitality	First Aid		3
		Lost Time		1
		No Injury		1
	Faculty of Health, Public Safety & Community Studies	First Aid	1	3
		Health Care	2	2
		Lost Time	1	1
		No Injury	1	
Faculty of Technology & Trades	First Aid	3	3	
	Health Care	2	1	
	No Injury	2	1	
Financial, Office and Legal Studies	First Aid	1		
School of Algonquin College in the Ottawa Valley	First Aid	4	7	
	Health Care	1	1	
	Lost Time	1		
	No Injury		1	
School of Part Time Studies	Lost Time	1		
VP Academic Count			<b>24</b>	<b>27</b>
VP Administration	Ancillary Services	First Aid	9	13
		Health Care	4	5
		Lost Time	1	1
		No Injury	3	3
	Finance	First Aid	1	1
		Health Care	1	
		No Injury		1
	Human Resources	Health Care	1	
	ITS	First Aid		1
	Marketing	First Aid		1
Physical Resources	First Aid	4	6	
	Health Care		1	
	Lost Time	1	2	
Receiving & Mail Services	No Injury		1	
VP Administration Count			<b>25</b>	<b>36</b>
VP Human Resources	Human Resources	Health Care		1
		No Injury		1
VP Human Resources Count			<b>2</b>	
<b>Grand Total</b>			<b>61</b>	<b>74</b>
			<b>Health Care Total</b>	<b>13 12</b>
			<b>Lost Time Total</b>	<b>6 6</b>
			<b>Lost Time Injury Frequency</b>	<b>0.41 0.39</b>

*Lost time injury frequency is the rate of lost time injuries per 100 employees per year*

## Staff Accident / Incident Statistics

Count of Incident Number	Year	
Group	2008	2009
Executive Director Advancement	2	
Office of the President	1	3
VP Business Development	2	2
VP Student Services	7	4
VP Academic	24	27
VP Administration	25	36
VP Human Resources		2
<b>Grand Total</b>	<b>61</b>	<b>74</b>

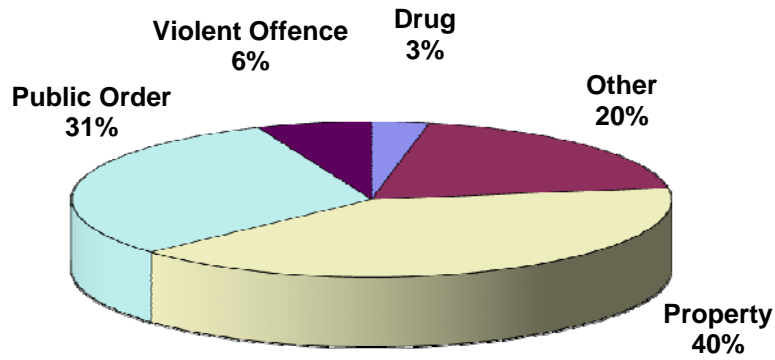
Count of Incident Number	Year	
Incident Type	2008	2009
Caught In, On, Between	2	9
Exposure	4	9
Hazard Only	1	
Other	2	1
Slip, Trip, Fall	22	26
Sprain / Strain	17	18
Struck Against	8	3
Struck By	5	7
Violence		1
<b>Grand Total</b>	<b>61</b>	<b>74</b>

Count of Incident Number	Year	
Accident Outcome	2008	2009
First Aid	35	44
Health Care	13	12
Lost Time	6	6
No Injury	7	12
<b>Grand Total</b>	<b>61</b>	<b>74</b>

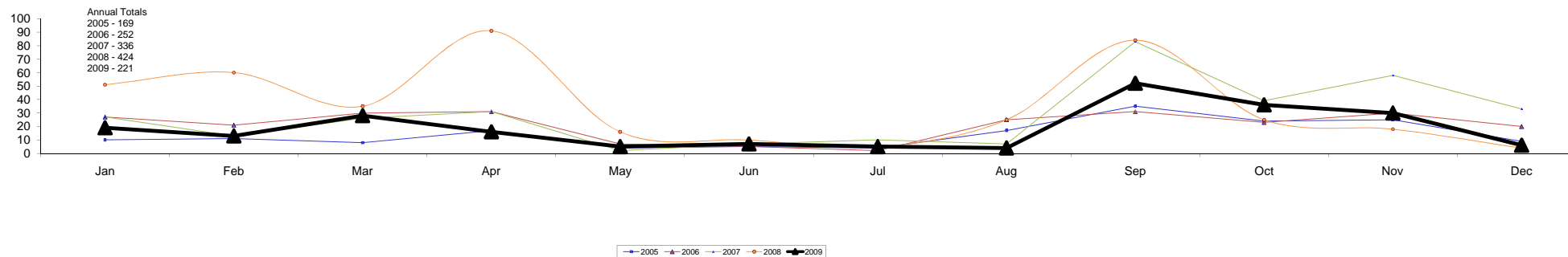
Count of Incident Number		Year	
Incident Type	Accident Outcome	2008	2009
Caught In, On, Between	First Aid	1	7
	Health Care		1
	No Injury	1	1
Exposure	First Aid	2	6
	Health Care		2
	No Injury	2	1
Hazard Only	First Aid	1	
Other	First Aid	1	
	Health Care	1	
	No Injury		1
Slip, Trip, Fall	First Aid	11	14
	Health Care	5	4
	Lost Time	4	1
	No Injury	2	7
Sprain / Strain	First Aid	9	8
	Health Care	6	4
	Lost Time	2	5
	No Injury		1
Struck Against	First Aid	6	2
	Health Care	1	
	No Injury	1	1
Struck By	First Aid	4	7
	No Injury	1	
Violence	Health Care		1
<b>Grand Total</b>		<b>61</b>	<b>74</b>

<b>IncidentType</b>	<b>2005</b>	<b>2006</b>	<b>2007</b>	<b>2008</b>	<b>2009</b>
Drug	26	60	85	47	26
Other	101	110	102	146	165
Other Fed/Prov					10
Property	1261	583	477	354	341
Public Order	497	535	465	403	259
Violent Offence	53	68	60	46	52
<b>Grand Total</b>	<b>1938</b>	<b>1356</b>	<b>1189</b>	<b>996</b>	<b>853</b>

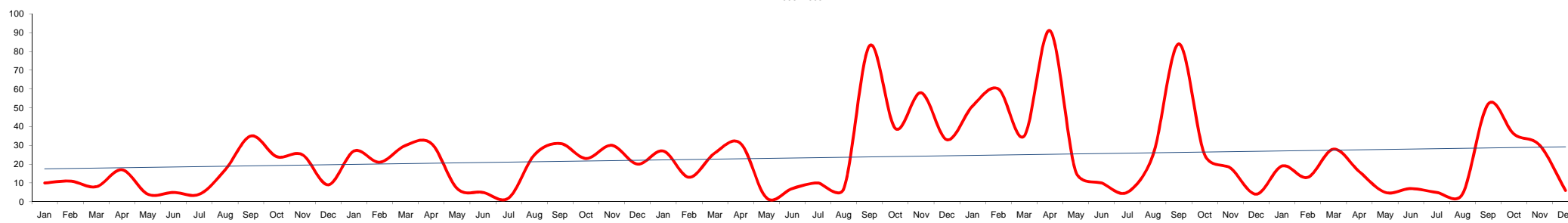
**2009 Security Incident Mix**



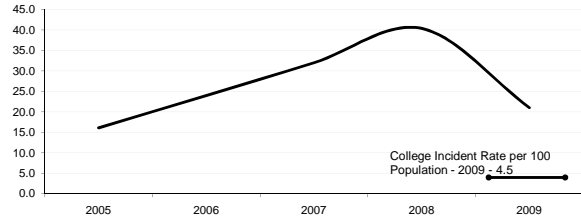
Residence Security Incidents By Month - Running Totals  
2005 - 2009



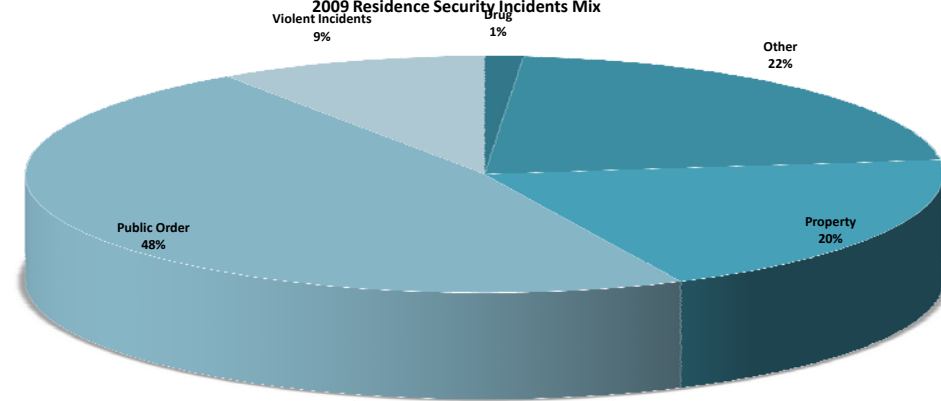
Residence Security Incidents  
2005-2009



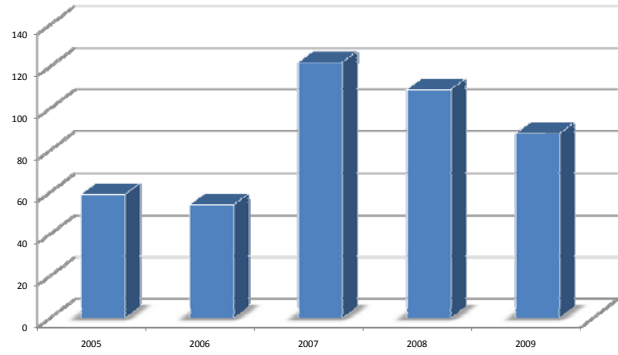
Residence Incident Rate per 100 Population



2009 Residence Security Incidents Mix



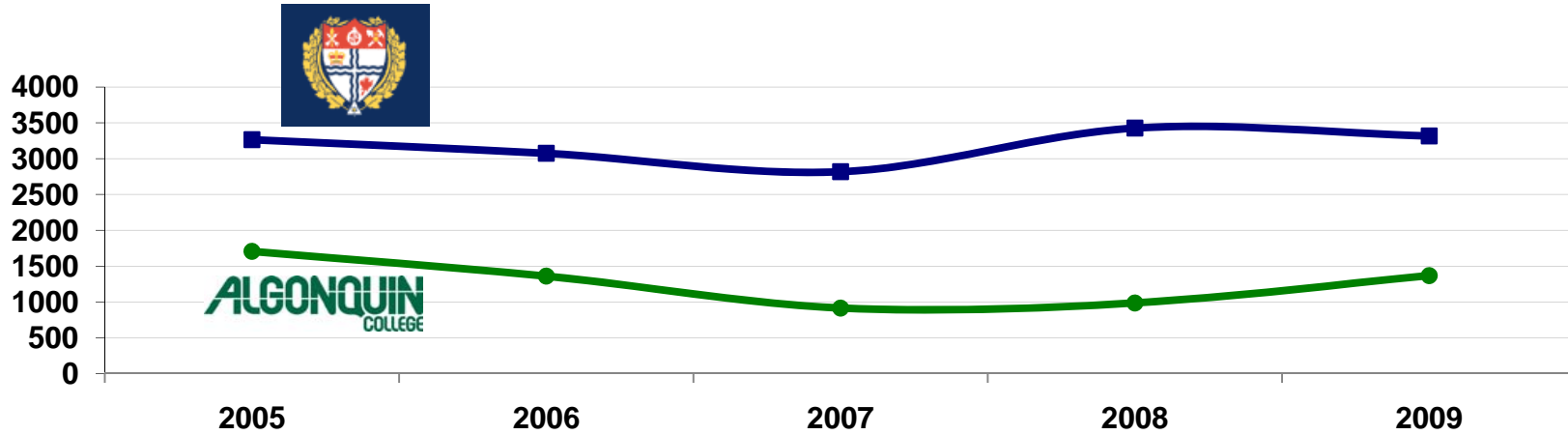
SEP - OCT Incidents



% of Incidents Involving Drugs / Alcohol

Type	2006 Incidents	2006 % Involved	2007 Incidents	2007 % Involved	2008 Incidents	2008 % Involved	2009 Incidents	2009 % Involved
Drug	14	100.0%	32	100.0%	29	100.0%	3	100.0%
Other	21	61.9%	35	22.9%	40	27.5%	48	58.3%
Property	52	26.9%	46	21.7%	30	16.7%	44	36.4%
Public Order	135	57.0%	199	58.8%	300	72.0%	105	62.9%
Violent Incidents	30	70.0%	24	33.3%	25	44.0%	21	52.4%
<b>Overall</b>	<b>252</b>	<b>55.2%</b>	<b>336</b>	<b>52.1%</b>	<b>424</b>	<b>64.2%</b>	<b>221</b>	<b>56.1%</b>

Ottawa Police Property Crime Rates / Algonquin College Property Incidents  
Rate per 100,000



Ottawa Police Violent Crime Rates / Algonquin College Violent Incidents  
Rate per 100,000

