

# Welcome!

## Professional Graduate Education Programs: How are they different?

*This session considers what has changed in graduate-level education programming, and what a professional graduate credential may (and may not) do for your growth and career. Info about Western's fully online professional master's and doctoral degrees will be shared.*

**Elan Paulson (Program Director)**

**[elan.paulson@uwo.ca](mailto:elan.paulson@uwo.ca)**

**Cheryl Bauman-Buffone (Instructional Faculty)**

**[cbaumanb@uwo.ca](mailto:cbaumanb@uwo.ca)**

**Don Moen (program graduate, AC colleague)**

# Today's Agenda

1. Professional learning graduate programs in the 21<sup>st</sup> century
2. Professional education programs at Western University
  - Fees & Funding
  - Application & Admission Process
3. Q & A

# Professional Education Programs: Student Profile

- ***Why a professional education degree?*** As a faculty member at a Community College, I recognized an opportunity to thoroughly examine a problem of practice that had been plaguing my college for some time.
- ***How has the program been significant for growth?*** Since completing my degree, I have found my confidence has grown substantially. My manager has suggested that I present my OIP to the Senior Management Team at my college. I hope to begin implementing some of this work in the upcoming year.
- ***OIP Capstone Title:*** Enhancing Employability Skill Sets: The Obligation of Community Colleges to be Greater Than the Sum of Their Parts [[link](#)]



Dr. Linda Hill  
(2017)

*Role:* Coordinator:  
Quality Assurance  
& Curriculum

# Discussion

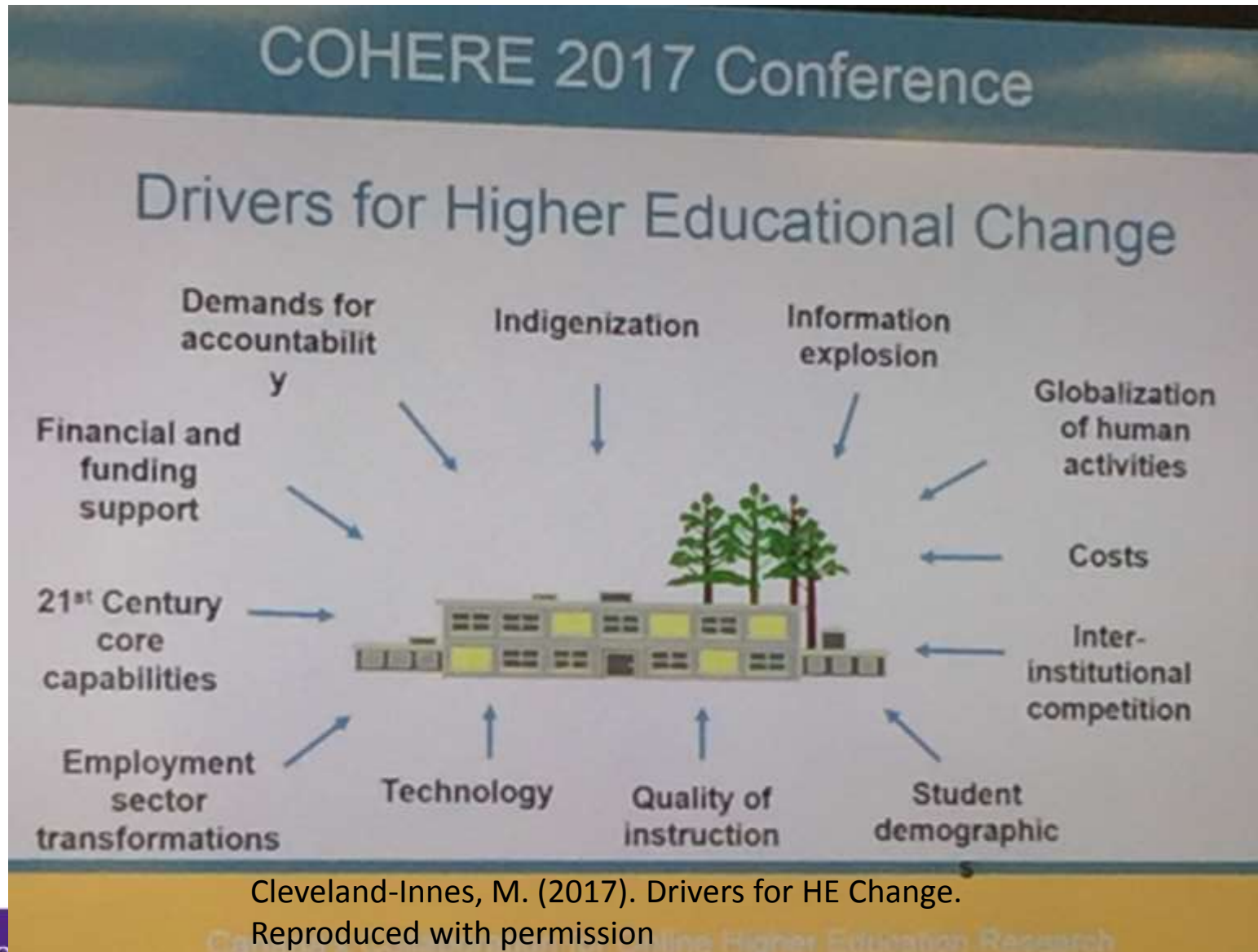
## “Wicked Problems”

- Difficult to define/solve
- Explained in multiple ways
- Unique (to contexts, etc.)
- Other problems are symptoms
- Planners responsible for outcomes resulting from actions

## ***TASK:***

Introduce yourself and briefly describe one “wicked problem” you or a colleague may be currently facing in within your particular unit or institution.

# Changing Contexts in 21<sup>st</sup> Century HE



# Research- vs Professional Learning-Focused Programs in Education

THEORY

*“Stewards of the  
academic discipline”*

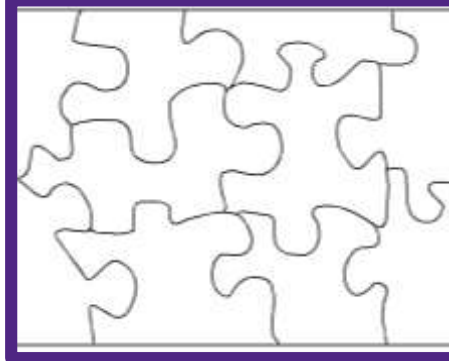
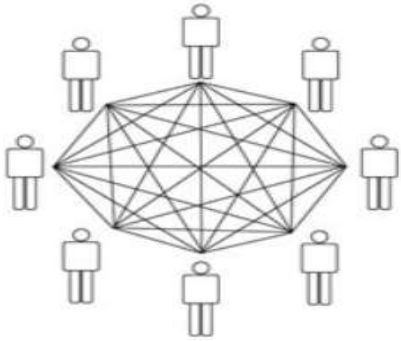
VS

*“Stewards of the  
profession”*

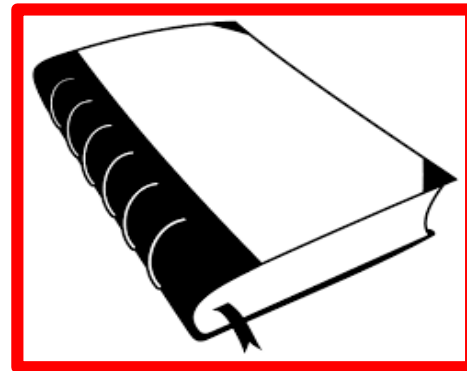
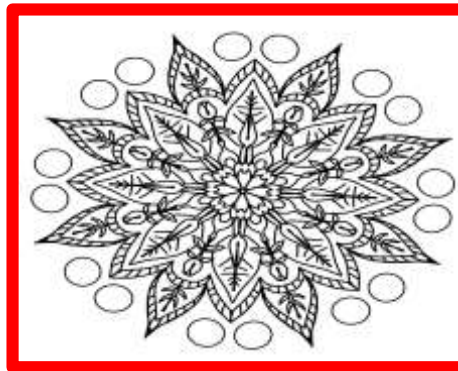
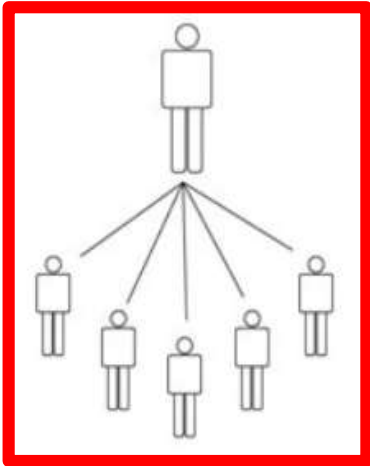
RESEARCH

PRACTICE

# Comparing Program Purpose & Focus



## PROFESSIONAL PROGRAMS



## RESEARCH PROGRAMS



# Organizational Improvement Plan Capstones: Addressing “Wicked” Job-Embedded Problems

## Higher Education/Community

- Curriculum Congruence of an HR Baccalaureate Degree Program to Industry Requirements, *Wesley D. Sallenback*
- Supporting Department Chairs as Educational Leaders in a Polytechnic Context, *Jennifer Marran*
- Aboriginal Offender Parole Outcomes, *Truman Paul Tremblay*

## Early Education/K-12

- Improving Principal Professional Practice Through Communities of Practice, *Lisa Clarke*
- Increasing Teacher Capacity in Supporting Student Mental Health, *Mary Louise Ireland*
- Changing School Culture to Engage Disengaged Students, *Trisha E. Sotropa*

# Your Advancement in/with Professional Programs

Professional Programs	Personal & Professional Growth Areas
<b>Learn in collaboration</b> →	Improve capacities to learn individually and in/from teams
<b>Investigate themes for practice</b> →	Build ability to make systematic & research-informed decision-making
<b>Address job-embedded problems</b> →	Develop expertise in areas that are meaningful and relevant to your work
<b>Create a job-relevant final project</b> →	Improves workplace policies, practices, processes, relationships
<b>Steward of the Profession</b> →	Work and organizational improvement in practice

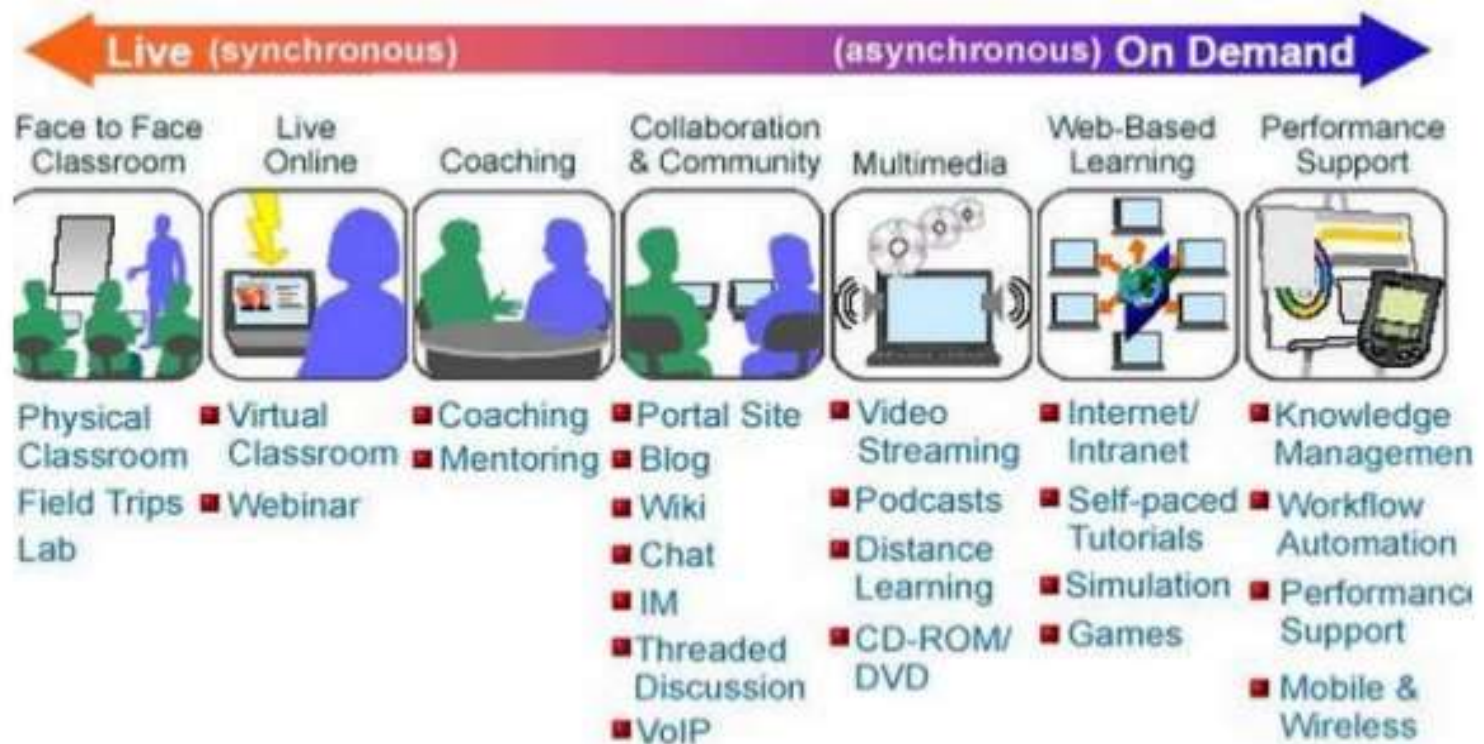
# Who takes Western's professional doctorate in Educational Leadership?\*

Live remote from campus	87%
Live outside Canada	7%
Master degrees in Education	40%
K-12 teaching certification	50%
Female	60%
Self-identified FMNI	3%
Average GPA	80.5%
**Average years of work	12.8
Average age	40.4

*\*4 cohorts, past 2 yrs, n=154 (approximate) \*\*Formal and informal leadership*

# Ways to take professional degrees

## Types of Distance Learning and Education



# Western University



GRADUATE EDUCATION

Take charge of your future.




# Graduate Education Programs Comparison\*

	Professional Programs Education (MPed/EdD)	Research Intensive Programs in Education (MA/PhD)
<i>Duration</i>	<b>2-3 Years**</b>	2-4 Years**
<i>Program Start</i>	<b>September</b>	September
<i>Fields of Study</i>	<b>13</b>	9
<i>Delivery</i>	<b>Online</b>	Onsite
<i>Focus</i>	<b>Professional-focused</b>	Research-focused
<i>Final Project</i>	<b>Capstone</b>	Thesis
<i>Cohort-based</i>	<b>Yes</b>	No
<i>Job-embedded (maintain employment)</i>	<b>Recommended</b>	Discouraged

\*Excluding MPed TESOL, which is onsite, and Aboriginal Education, which is blended

\*\*Normal time to completion. Individual times may vary.

# Western's Online Professional Education Programs

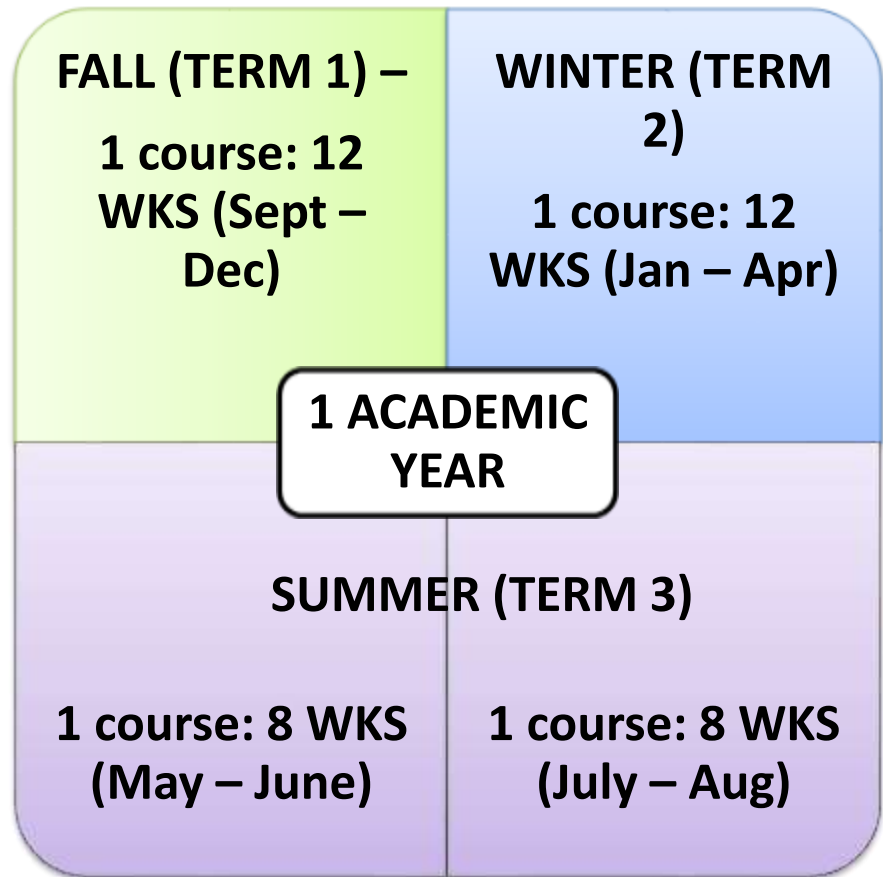
1. Educational Leadership  
*Master's and Doctoral programs*
2. Equity, Diversity and Social Justice
3. International Education
4. Curriculum and Pedagogy
5. International School Leadership 
6. Aboriginal Education *blended*
7. Early Childhood Education
8. Teaching Students with Exceptionalities
9. Applied Behavior Analysis (ABA) *courses are BACB certified*
10. Mathematics Education
11. Multiliteracies
12. Teaching English to Speakers of Other Languages (TESOL) *onsite*

[www.edu.uwo.ca/graduate-education/program/mped/index.html](http://www.edu.uwo.ca/graduate-education/program/mped/index.html)

# Timeline for Professional Education Programs

## *Our programs are:*

- ✓ **Cohort-based** (~20 max)
- ✓ **Course-based**, with a final major research informed project
- ✓ **Sequential:** No more than 1 required course at a time
- ✓ Normally completed in 2 or 3 years' completion (6 or 9 terms )





# Fees & Funding

Western  Education

# Program Fees

- **EdD:** Approx. \$3,800 per term (domestic rate, Fall 2017)
- **MPEd:** Approx. \$2878 per term (domestic rate, Fall 2017)
  - *Work full-time without interruption*
- Fees due 3 terms per year – September, January, May
- Fee breakdown available on the Office of the Registrar's website

[www.edu.uwo.ca/graduate-education/tuition-fees.html](http://www.edu.uwo.ca/graduate-education/tuition-fees.html)

# Funding Sources\*

1. Faculty of Education Entrance Scholarships

[www.edu.uwo.ca/graduate-education/scholarships.html](http://www.edu.uwo.ca/graduate-education/scholarships.html)

2. School of Graduate & Postdoctoral Studies (SGPS) Awards

[www.grad.uwo.ca/current\\_students/student\\_finances/index.html](http://www.grad.uwo.ca/current_students/student_finances/index.html)

3. Government and industry scholarships

4. Employer assistance & support

5. OSAP or bank loans

6. Lifelong Learning Program (LLP) – Canada Revenue Agency

\*Check criteria for eligibility

# Application & Admissions

Western  Education

# Key Areas Considered by the Program Admissions Committee

*Not weighed and in no particular order:*

- Admission Average
- Statement of Intent
- References – Academic *and/or* Professional
- Work Experience
- Some programs include additional requirements

[www.edu.uwo.ca/graduate-education/admission\\_contact/admission.html](http://www.edu.uwo.ca/graduate-education/admission_contact/admission.html)

# Program Application Process

## 1) Apply to Western University online

- References (automatic process)
- Statement of Intent is part of online application

## 2) Submit supporting documentation

- Unofficial transcripts okay for initial application

**DEADLINE: Most MPEd Programs: April 30, 2018**

[www.edu.uwo.ca/graduate-education/admission\\_contact/apply.html](http://www.edu.uwo.ca/graduate-education/admission_contact/apply.html)

# Before You Apply

1. Review admission requirements  
[www.education.uwo.ca/graduate-education/admission\\_contact/admission.html](http://www.education.uwo.ca/graduate-education/admission_contact/admission.html)
2. Review program information  
<http://www.education.uwo.ca/graduate-education/index.html>
3. Prepare documentation (transcripts, reference letters, statement of intent, etc.)
4. Note application deadlines
5. Contact office with questions/concerns

# For more information...

## *Contact the Graduate Programs Office*

- Phone: +1-519-661-2099
- Email: [graded@uwo.ca](mailto:graded@uwo.ca)
- Info: [www.edu.uwo.ca](http://www.edu.uwo.ca)